

Product Code: RIK-Q50-W12

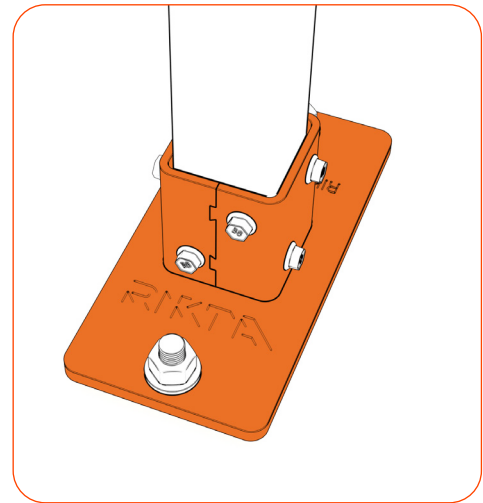
DESIGN SPECIFICATIONS

- Small footprint baseplate designed to work in narrow spaces.
- Accepts 50 x 50 with a 3.0 mm minimum steel hollow section (SHS).
- M12 Anchor holes optimally spaced to ensure maximum capacity.
- Fast and simple installation via self drilling screws (TK14-25).

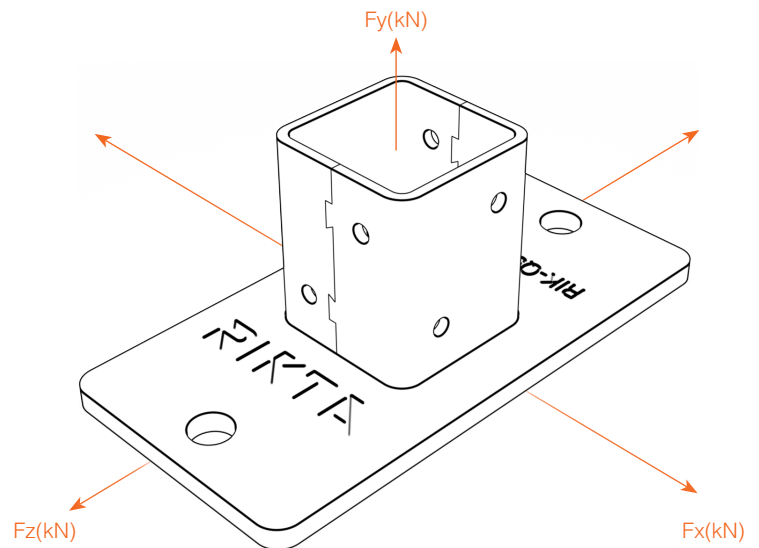
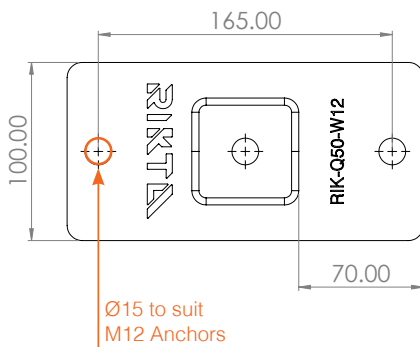
PRODUCT FINISHES



HDG



PRODUCT DETAILS

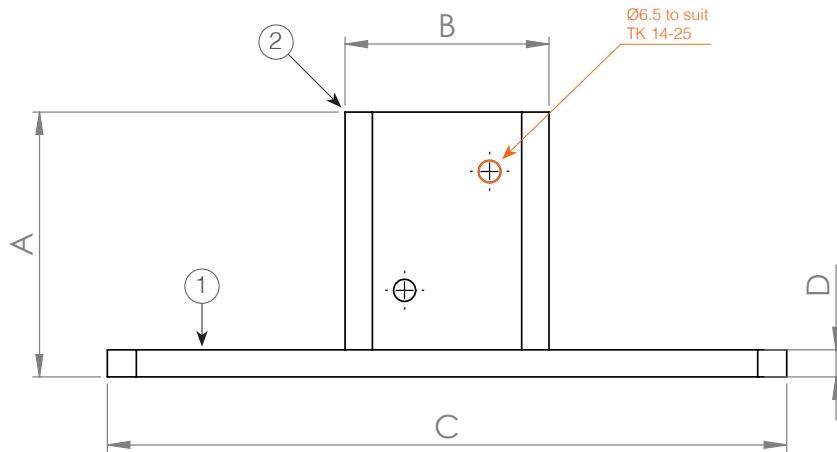


ULS DESIGN VALUES

Direction of Force	Peak Load (kN)
Fx(kN)	8.00
Fy(kN)	23.31
Fz(kN)	11.09

Product Code: RIK-Q50-W12

PRODUCT DETAILS



Dimensions (mm)	
A	78
B	60
C	200
D	8
Materials	
①	AS G350 Mild Steel
②	AS1163 C450L0 SHS 65x65x6

FASTENERS & ACCESSORIES

RIK-Q50-J

Joiners



Q50-J12



Q50-J13



Q50-J14

RIK-Q50-M

Mounting Brackets



Q50-M-C



Q50-M



Q50-M-D



Q50-M-S

FASTENERS



UC FBS II M10



FAZ II M10 & M12



TEK Scw 14g x 25mm