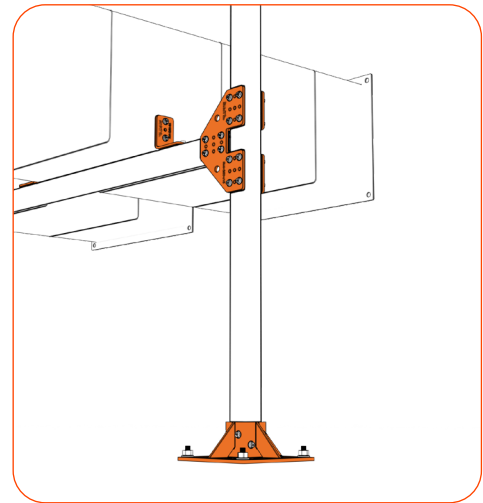


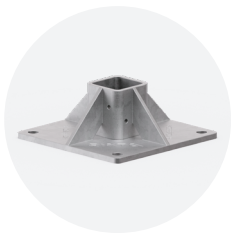
Product Code: RIK-Q50-G12

DESIGN SPECIFICATIONS

- Designed with lateral seismic loads in mind.
- Accepts 50 x 50 with a 3.0 mm minimum steel hollow section (SHS).
- M12 Anchor holes optimally spaced to ensure maximum capacity.
- Reinforced with gussets for increased seismic lateral load capacity.
- Fast and simple installation via self drilling screws (TK14-25).

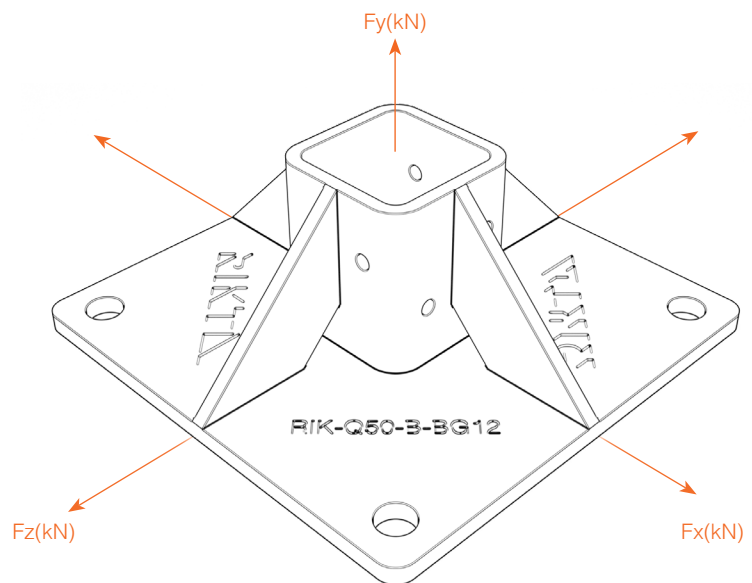
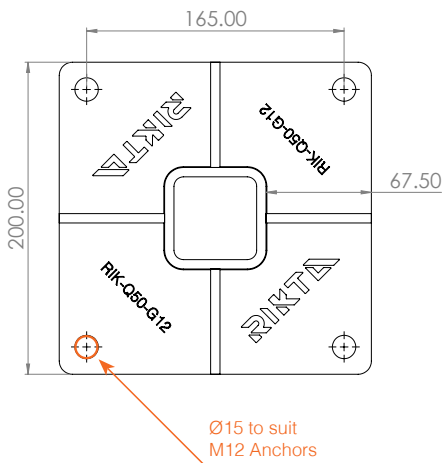


PRODUCT FINISHES



HDG

PRODUCT DETAILS

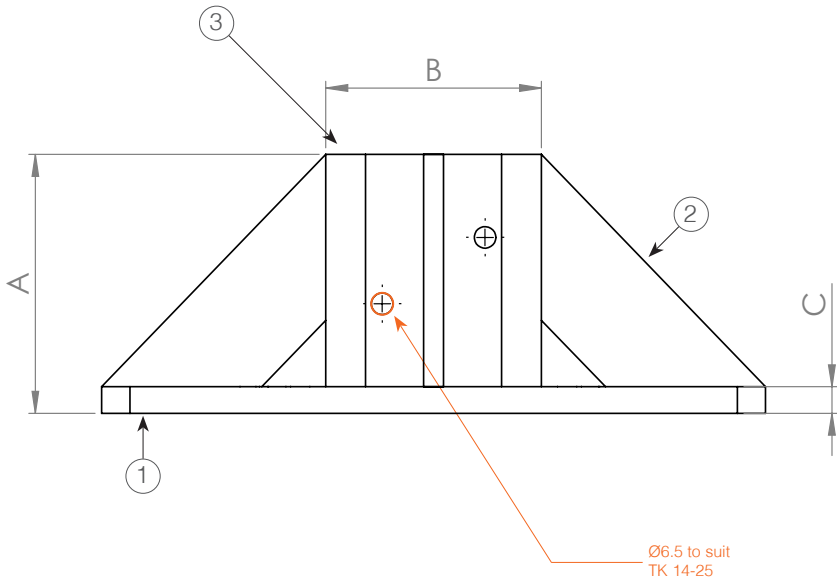


ULS DESIGN VALUES

Direction of Force	Peak Load (kN)
Fx(kN)	11.09
Fy(kN)	23.31
Fz(kN)	11.09

Product Code: RIK-Q50-G12

PRODUCT DETAILS

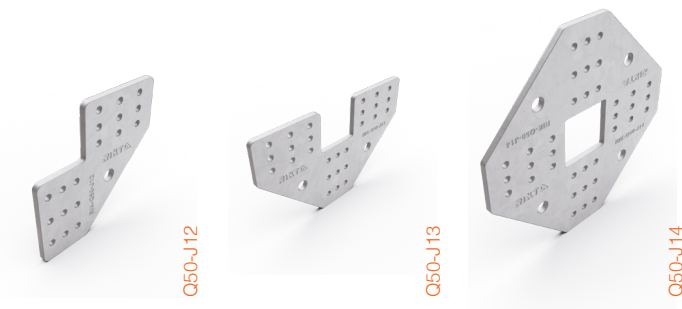


Dimensions (mm)	
A	78
B	60
C	8
Materials	
①	AS G350 Mild Steel
②	AS G350 Mild Steel
③	AS1163 C450L0 SHS 65x65x6

FASTENERS & ACCESSORIES

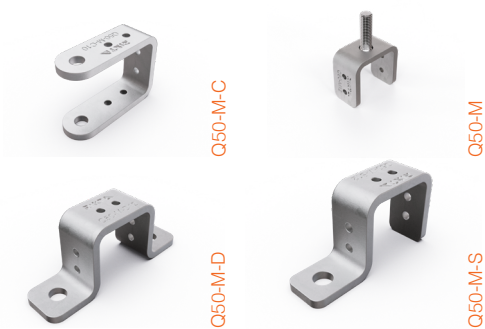
RIK-Q50-J

Joiners



RIK-Q50-M

Mounting Brackets



FASTENERS

