

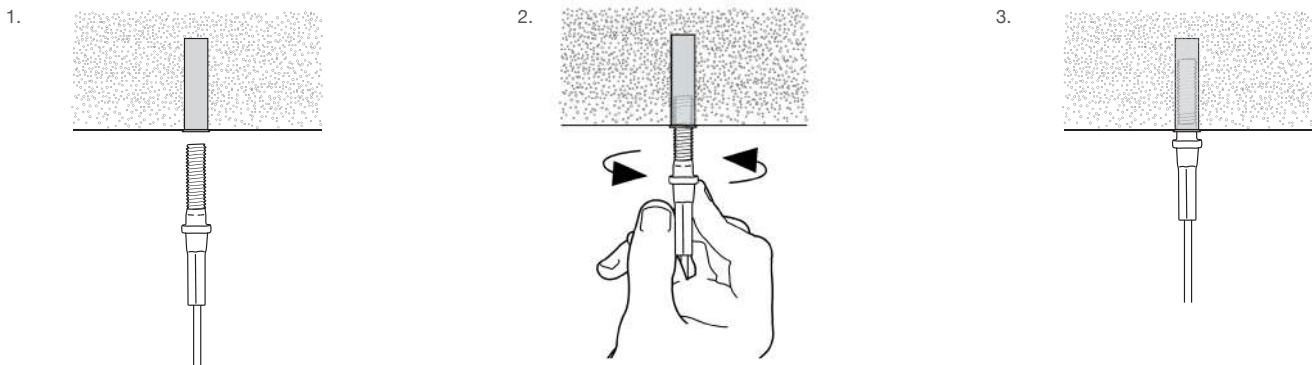
Stud

For anchoring into concrete ceilings, metal decking and pressed metal brackets.

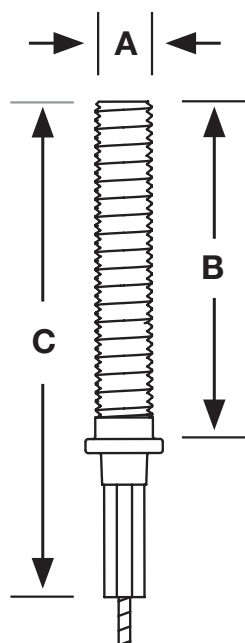
- Supplied with Drop-in Anchors(as standard) or nuts as required
- Available in M6, M8 and M10, up to 225kg SWL, with a 5:1 safety factor
- Supplied as a ready-to-use kit with Gripplle wire rope and hanger
- Available in lengths from 1 - 10 m
- Other lengths are available on request
- Stainless steel and fire rated variants available



Installation



Specifications



Size	A (Ø)	B (mm)	B (mm)
No.1*	M6	20	48
No.2	M6	20	48
	M8	45	70
No.3	M10	45	77
	M6	20	48
	M8	45	70
No.4*	M10	45	77
	M6	45	77

Stud available in M6, M8 and M10.
Please substitute the number for size required.

Install fixings in accordance with manufacturer's specifications.

** No.1 & No.4 not available in Stainless Steel*

Standard Hanger Options



For more options on available hangers please contact us or visit gripplle.co.nz

