

M6 Hex Standard

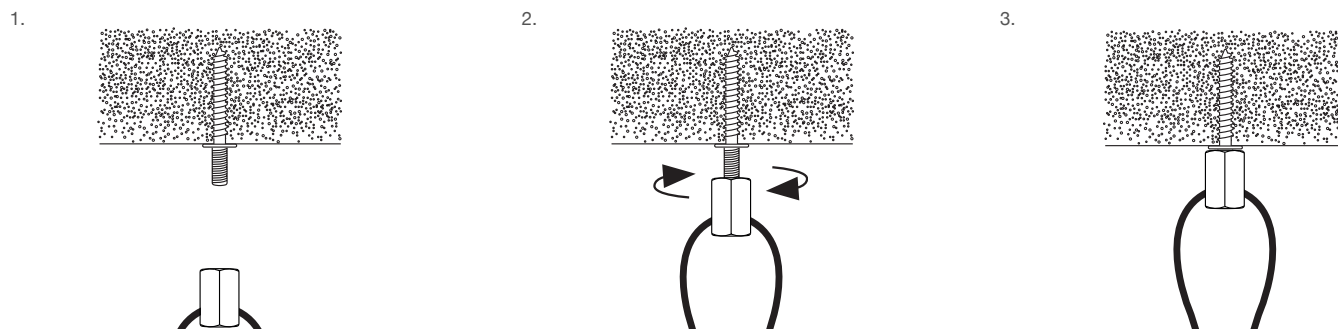
End fixing

- For direct attachment to an M6 thread
- Can be installed vertically or horizontally
- Easily removable
- Ideal for use with M6 cracked concrete anchor

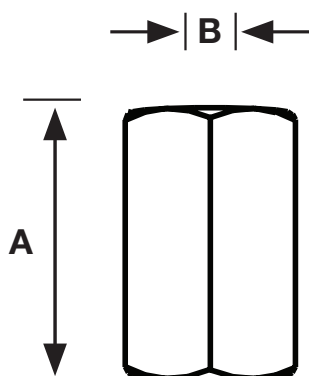
Non Gripple product. Supplied directly by Polyplas International.



Installation



Specifications



Size	A (mm)	B (mm)
No.1	16	M6
No.2	16	M6

Standard Hanger Options



For more options on available hangers please contact us or visit gripple.co.nz

