

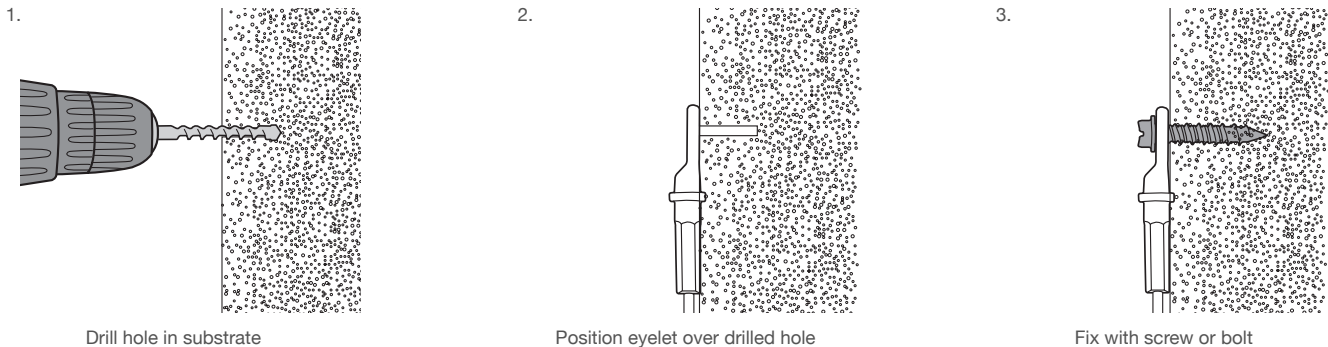
Eyelet

For attachment to a variety of substrates using suitable fixings

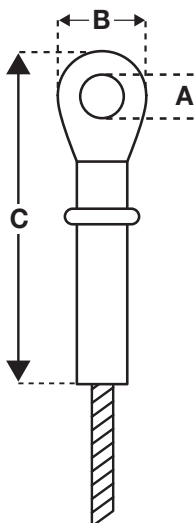
- Can be used for horizontal and vertical suspensions
- Available for use with No.1, No.2 and No.3 hangers with up to 5:1 safety factor
- Comes as a ready-to-use kit with Gripple wire rope and hanger
- Available in lengths from 1 m to 10 m (other lengths available upon request)
- Fire rated version available



Installation



Specifications



Size	A (mm)	B (mm)	C (mm)
No.1	6.2	7.7	12
No.2	6.2	7.7	12
No.3	6.2	7.7	18

Submittal Information

Safe Working Load:
Refer to hanger load ratings and safe working loads.

Material:
Steel
Finish – Bright zinc plated

Approvals:
Lloyds certified

Standard Hanger Options



Standard Hangers



Express



Angel Male



UniGrip



Duct Trapeze

For more options on available hangers please contact us or visit gripple.co.nz

Important Recommendations

- Construction materials and conditions vary on different sites. If it is suspected that the base material has insufficient strength to achieve a suitable fixing, contact Gripple Ltd. The responsibility for judgement of base material strength lies with the installer, and not with Gripple Australia & New Zealand.
- Not to be used in marine, coastal or corrosive environments.
- The information and recommendations given herein are believed to be correct at time of writing. The data has been obtained from tests done under laboratory, or other controlled conditions and it is the user's responsibility to use the data given in light of conditions on site, taking account of the intended use of the products concerned.
- Whilst Gripple Australia & New Zealand can give general guidance and advice, the nature of Gripple products means that the ultimate responsibility for selecting the correct product for a particular application must lie with the customer.
- All products must be used, handled and applied in accordance with current product instructions and manufacturers recommendations for use, published by Gripple Australia & New Zealand.

