

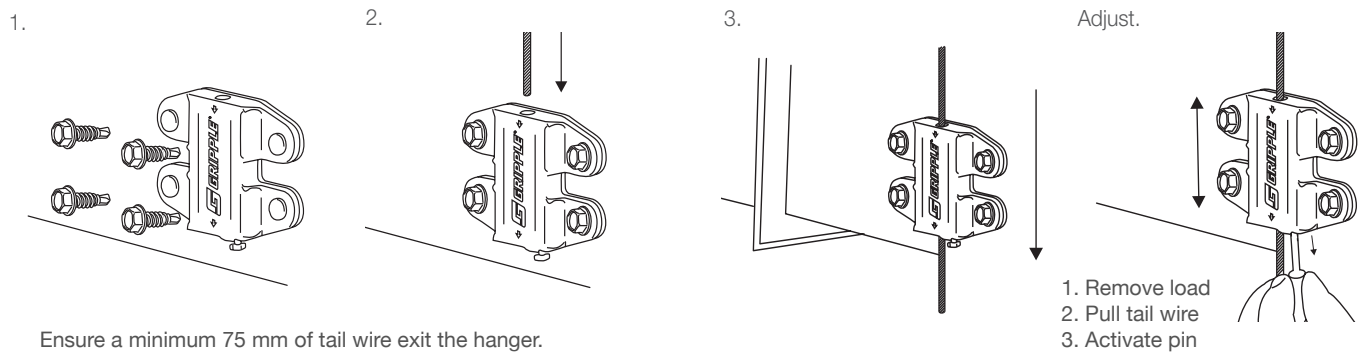
# Butterfly Trapeze

Ideal for fast suspension of rectangular ducting and associated equipment

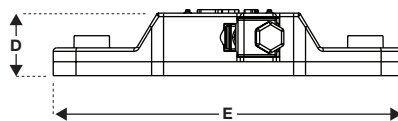
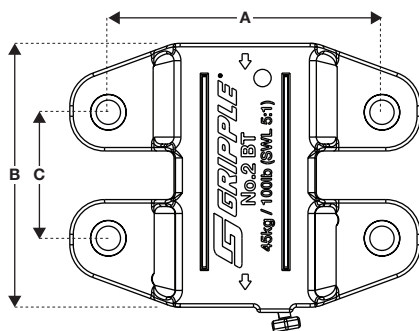
- Simple vertical adjustment using the integral pin prior to applying load
- Spreads the load across 4 fixing points
- Rubber pad prevents air leakage and dampens vibration
- Conforms to DW144 Class D
- Load rated at 45 kg with a 5:1 safety factor
- Can be used for multi-tiered installations
- Supplied as a ready-to-use kit
- Also available in black



## Installation & Adjustment



## Specifications



Dimensions	mm
A	39.0
B	38.0
C	18.0
D	9.0
E	51.0

\*Self drilling screws not supplied

## Submittal Information

### Safe Working Load:

Butterfly Trapeze - 45 kg @ 5:1 safety factor

### Material:

**Housing** - Type ZA2 Zinc

**Wedge** - Sintered steel hardened to min. 56 Rockwell C

**Spring** - Stainless Steel (Type 302)

**End Cap** - UV stabilised homopolymer propylene

**Rubber Pad** - EPDM 40±5 SHORE A

**Pin** - A2 Stainless Steel

## Available End Fixings



Loop



M6 & M8  
Stud



Snap  
Hook



Toggle



45 Deg  
Eyelet



End Stop

For more options on available end fixings please contact us or visit [gripple.co.nz](http://gripple.co.nz)

